

# GRØN DYST

## 'Satellite Monitoring of Water Movement Across the Earth'

*P. L. Svendsen<sup>1</sup>, M.R Nielsen<sup>2</sup> and B.L. Larsen<sup>2</sup>*

<sup>1</sup>DTU IMM, Technical University of Denmark  
*s042453@student.dtu.dk*

<sup>2</sup>DTU Electrical Engineering, Technical University of Denmark  
*s04237@student.dtu.dk, s960728@student.dtu.dk*

### Introduction

We have all heard about it but how critical is the global warming to sea level rising? By use of up to date satellite radar and gravitational data which, for the past eight years, have monitored the Earth. We have built models showing the water movement over land and sea masses, more specifically a model for the Greenland ice sheet and a model for the global sea level. Greenland ice sheet melting is one of the key contributors to sea level change. With global satellite data coverage since 1993, we get an interesting picture of the development.

### Preliminary findings

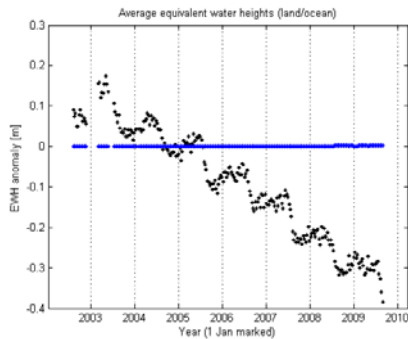


Figure1. Black dots are Greenland melting.  
Blue line is water level for the rest of the world.

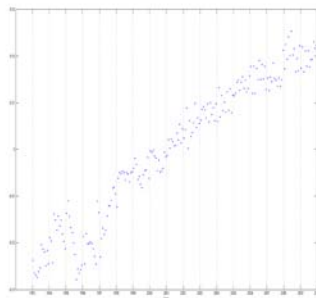


Figure2. Water level world wide over the last 18 years.